

Product Group: SG2 Programmable Relay

Date Issued: 9/14/2017

Number: AN-SG2-003

Revision: B

### **Title:** Opening and Linking SG2 Software to SG2 unit

#### **Summary:**

We will be opening a new SG2 program and linking the SG2 software to the SG2 Programmable Logic Relay. In this example, we will be using the SG2 Client software version 3.4 in conjunction with Windows 7 operating system. The program will be shown in the Ladder Logic format.

#### **Process:**

##### **Connect Programming Cable:**

- 1) Remove plastic connection cover from SG2 RS-232 port, using small flat blade screwdriver.
- 2) Install the rectangular RS-232 end of programming cable into the SG2 Programmable Relay port.



Figure 1



Figure 2

- 3) Plug opposite end of programming cable into the computer (Figure 3 or Figure 4).



Figure 3



Figure 4: SG2-PL01

Information herein is provided by FactoryMation Technical Support "as is" with no guarantee of any kind. Customer is solely responsible for validating application, operation, maintenance, and code compliance and other information and data relating to the installation, operation, safety and maintenance of all components. FactoryMation does not guarantee that this information is suitable for your application, nor does FactoryMation assume any responsibility for your product design, installation, testing, or operation.

### Connect Power:



To minimize the risk of potential safety problems, follow all applicable local and national codes that regulate the installation and operation of your equipment. It is your responsibility to determine which codes should be followed, and to verify that the equipment, installation, and operation is in compliance with these codes.



Do not connect or disconnect wires or connectors while power is applied to the circuit.



Refer to the instruction sheet that is included with the product for additional directions and circuit protection recommendations.

- 1) Connect power to the SG2 Programmable Relay following the instructions that are included with the product.
- 2) Apply power to SG2 Programmable Relay.



Figure 5

Information herein is provided by FactoryMation Technical Support "as is" with no guarantee of any kind. Customer is solely responsible for validating application, operation, maintenance, and code compliance and other information and data relating to the installation, operation, safety and maintenance of all components. FactoryMation does not guarantee that this information is suitable for your application, nor does FactoryMation assume any responsibility for your product design, installation, testing, or operation.

### Opening the SG2 Programming Software

- 1) Select **Windows Start > All Programs >TECO folder > SG2 Client folder > SG2 Client.**

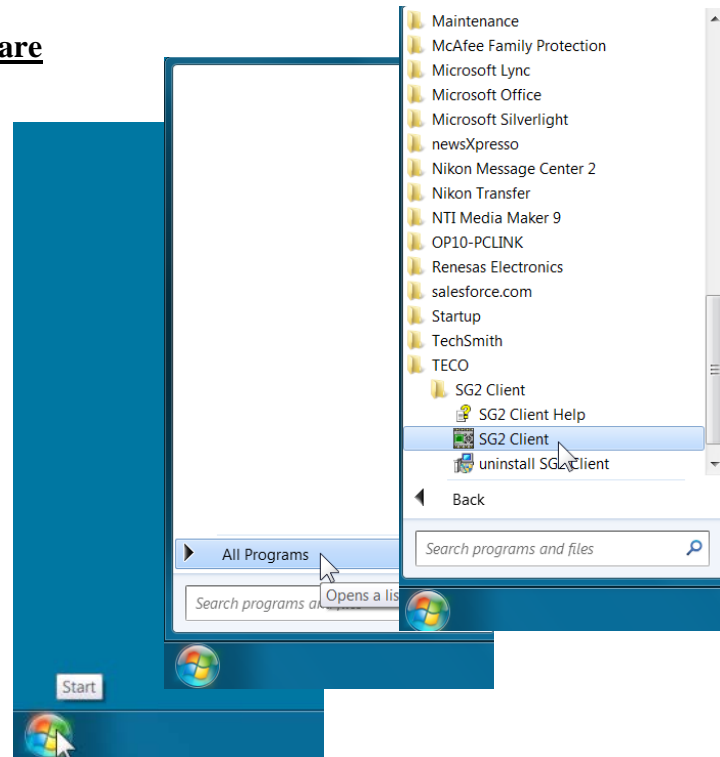


Figure 6

- 2) SG2 Client window will open.

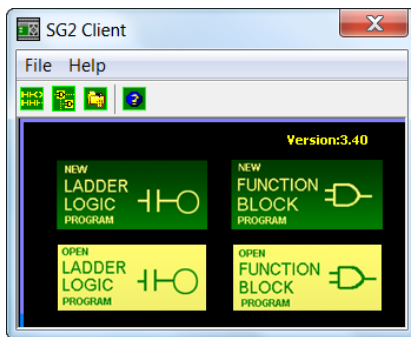


Figure 7

- 3) For this example, we will open a New Ladder Logic Program. Select **New Ladder Logic Program** button to open program.

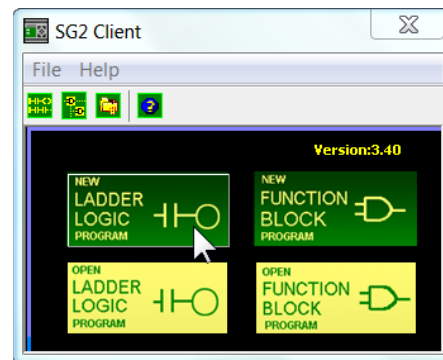


Figure 8

Information herein is provided by FactoryMation Technical Support "as is" with no guarantee of any kind. Customer is solely responsible for validating application, operation, maintenance, and code compliance and other information and data relating to the installation, operation, safety and maintenance of all components. FactoryMation does not guarantee that this information is suitable for your application, nor does FactoryMation assume any responsibility for your product design, installation, testing, or operation.

- 4) The select Model Type window will open. Select your **Model Type** from the list. This example will use the SG2-10HR-A.

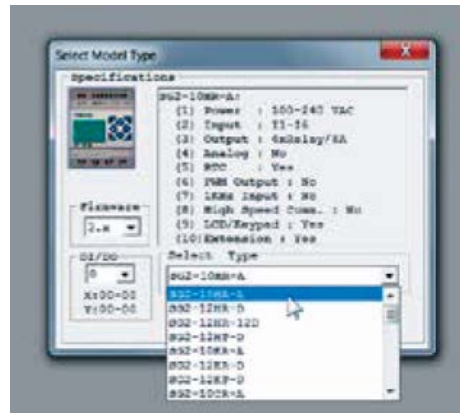


Figure 9

- 5) Select **OK** (Figure 10). SG2 Ladder Logic programming screen will open (Figure 11).

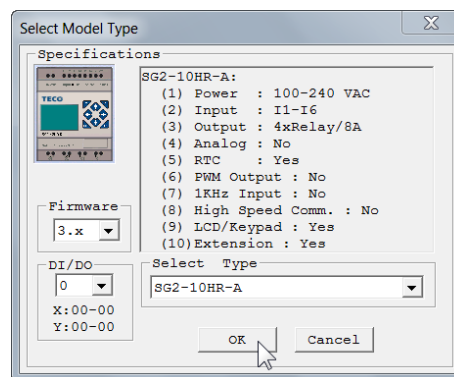


Figure 10

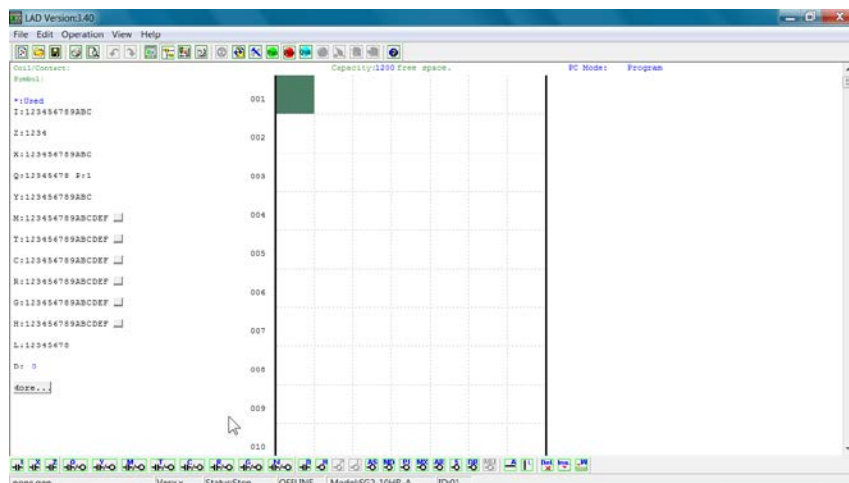


Figure 11

Information herein is provided by FactoryMation Technical Support "as is" with no guarantee of any kind. Customer is solely responsible for validating application, operation, maintenance, and code compliance and other information and data relating to the installation, operation, safety and maintenance of all components. FactoryMation does not guarantee that this information is suitable for your application, nor does FactoryMation assume any responsibility for your product design, installation, testing, or operation.

### Linking SG2 Programmable Relay to SG2 programming software

- 1) Open Operation tab > Link Com Port.

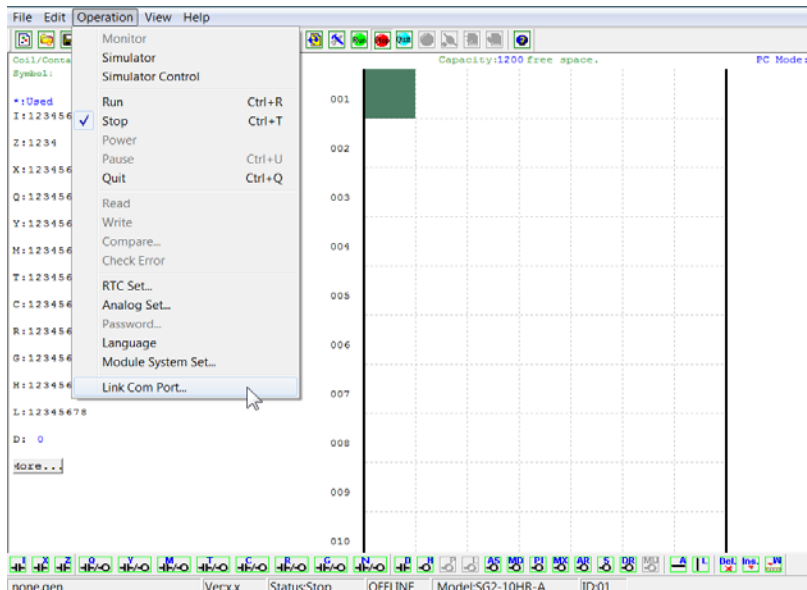


Figure 12

- 2) Link Com Port window will open. The Port shows the COM Port where the SG2 cable is plugged into. Communication Port location is automatically set when SG2 cable is installed.

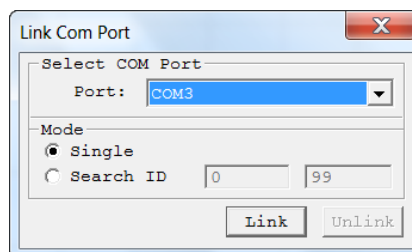


Figure 13

- 3) Select the **Link** button, to link the SG2 Programmable Relay unit to the SG2 programming software (Figure 14). “Connect Successfully” message will open. Select **OK** to complete link (Figure 15).

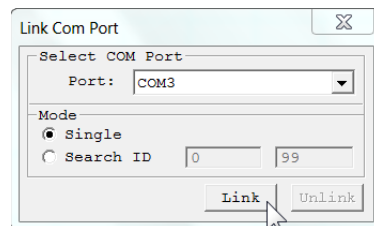


Figure 14

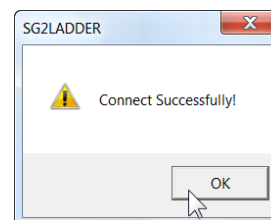


Figure 15

- 4) You have successfully linked the SG2 to the SG2 software.

Information herein is provided by FactoryMation Technical Support “as is” with no guarantee of any kind. Customer is solely responsible for validating application, operation, maintenance, and code compliance and other information and data relating to the installation, operation, safety and maintenance of all components. FactoryMation does not guarantee that this information is suitable for your application, nor does FactoryMation assume any responsibility for your product design, installation, testing, or operation.